

Stream[®]
Sign of Quality



Application

- *Domestic, irrigation usage*
- *Pond, aquarium, construction site*
- *Drainage of underground water*
- *Disposal of residual water from pools, etc.*

SPP370B

Plastic Residual Submersible Pump



www.streampumps.com

www.aquapumpsupply.com



SPP370B is suitable for use in domestic emergencies where a small area must be drained to the lowest level possible.

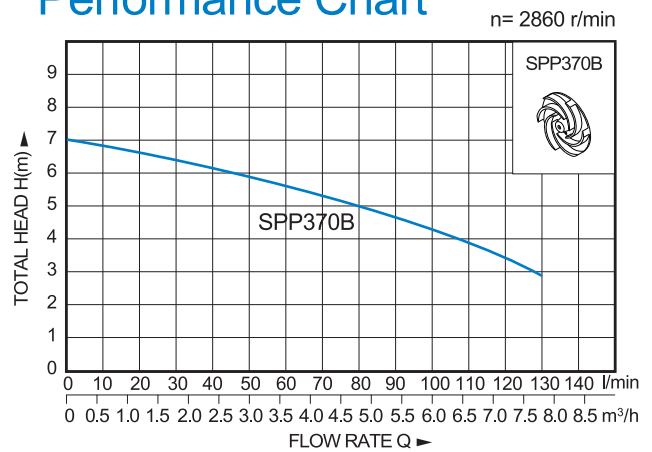
It is made of macromolecule plastic and characterized with high corrosion resistance, beautiful and convenient.

Cylinder water-cooled design can be efficiently prevent motor overheated after long-time operation.

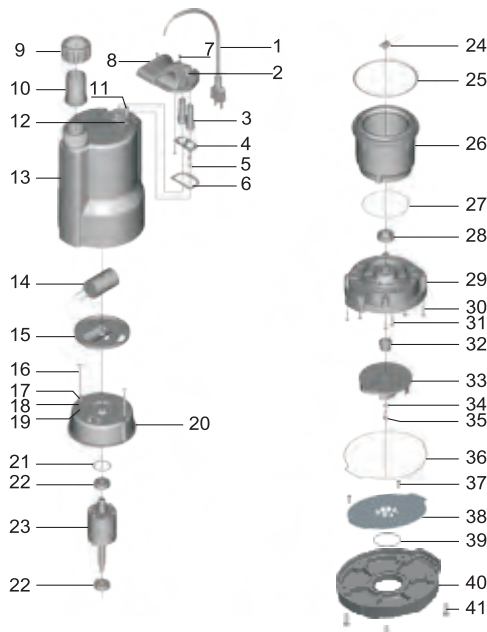
Operating Conditions

- Max submersible depth: 3m
- Liquid temperature up to +40°C
- Ambient temperature up to +40°C
- Liquid PH range: 5-9
- Max diameter of solid: 2mm

Performance Chart



Model	Power W	Outlet MM	Voltage V/HZ	Max.Flow L/MIN	Max.Head M	G.W KG	Dimension CM
SPP370B	370	32	220/50	130	7	5.3	20.0×19.0×30.0



Explosion

NO.	DESCRIPTION	NO.	DESCRIPTION	NO.	DESCRIPTION
1	Cable	15	Capacitor holder	29	Connection part
2	Screw	16	Bolt	30	Screw
3	Cable protector	17	Screw	31	Screw
4	Flange	18	Spring washer	32	Mechanical seal
5	Screw	19	Washer	33	Impeller
6	Gasket	20	Motor cover	34	Washer
7	Screw	21	Undulated washer	35	Bolt
8	Handle	22	Bearing	36	Gasket
9	Connection nut	23	Rotor	37	Screw
10	Outlet connector	24	Motor protector	38	Suction plate
11	Screw	25	"O"ring	39	"O"ring
12	"O"ring	26	Motor stator	40	Suction strainer
13	Motor casing	27	"O"ring	41	Screw
14	Capacitor	28	Oil seal		

Sic mechanical seal is available if required.